



<https://www.moundbasingsa.org/>

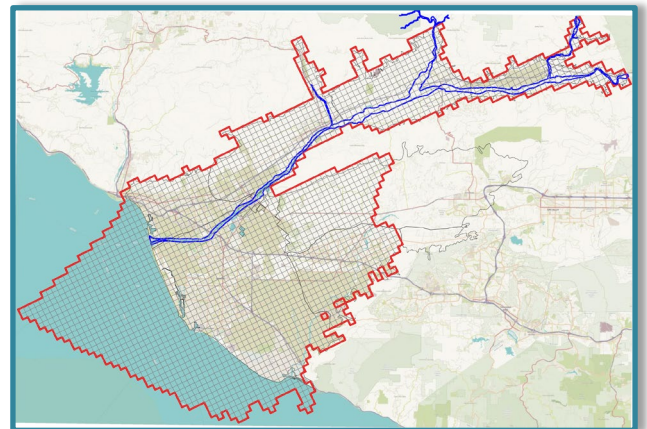


Groundwater Sustainability Plan Development Update

Your Groundwater Sustainability Plan (GSP) development team remains hard at work developing the GSP for the Mound Basin. The GSP will describe the groundwater basin, goals for sustainable management of the basin groundwater resources, and an implementation plan to achieve those goals by no later than 2042. A significant portion of the GSP development costs are covered by a Proposition 1 Groundwater Sustainability Planning Grant from the State. The GSP must be submitted to the California Department of Water Resources on or before January of 2022, otherwise the State Water Resources Control Board will take over management of the Basin. Thus, the GSP presents an opportunity for locals to decide how the Basin should be managed. For more information about our overall GSP planning process, please see our GSP development schedule at: <https://www.moundbasingsa.org/gsp/>.

Since our last newsletter, the GSP development team completed a draft of the hydrogeologic conceptual model (HCM) and groundwater conditions sections of the GSP. These sections describe the physical attributes of the Basin, groundwater levels, and groundwater quality. This information is being used to help develop the sustainable management criteria for the Basin. The HCM and groundwater conditions sections were posted on-line at <https://www.moundbasingsa.org/gsp/> and are available for review and comment by stakeholders. Please use our online comment form to submit your comments or questions <https://www.moundbasingsa.org/public-comments-invited/>.

Also since our last newsletter, United Water Conservation District Staff has been focused on developing a numerical model to simulate groundwater and surface water conditions in the Basin. The model was completed in late 2020 and will be used to simulate 50 years of future groundwater conditions to help evaluate whether projects or management actions will be necessary for sustainable management of the Basin. The 50-year simulations are currently in progress and results should be available in early 2021.



Lastly, the Agency began developing sustainable management criteria (SMC) for the Basin. Please see Page 2 for more information about the SMC.

Please join us at our second GSP Public Workshop on Thursday, March 4, 2021 at 6 pm on-line. Please visit <https://moundbasingsa.org/> for more information.

GSP Public
Workshop No. 2
Thursday
March 4, 2021
6 p.m.

A workshop will be held on-line to present information about groundwater conditions and sustainable management criteria. This workshop is a key opportunity for you to provide input into the groundwater sustainability planning process for the Basin. Your active participation is highly encouraged!

Please visit our website for workshop details:
<https://moundbasingsa.org/>

Get Involved!

At the core of SGMA is the idea that locals should make groundwater management decisions, not the State. Your input is critical for ensuring the Mound Basin GSP reflects local values. Contact our Clerk of the Board Jackie Lozano at: Jackiel@unitedwater.org to be added to our interested parties list!



Board Meetings

Regular Board Meetings are scheduled monthly on the third Thursday. Please visit our website for more information.

To receive Board meeting agendas via e-mail, please contact the Clerk of the Board Jackie Lozano at: Jackiel@unitedwater.org



Sustainable Management Criteria

As discussed in our prior newsletter, The GSP must include Sustainable Management Criteria (SMC) for each of the six applicable sustainability indicators. SMC are the most important part of the GSP because they define conditions in the basin that are to be avoided and conditions that are desirable to achieve.

MBGSA began developing the SMC for the Basin in mid-2020. The MBGSA Board began this process in June by receiving an overview of SMC requirements. The MBGSA Board then released a draft Sustainability Goal for public comment on July 16 and adopted the goal on September 17. The sustainability goal can be viewed at <https://www.moundbasingsa.org/gsp/>.

Sustainability Indicators	Lowering GW Levels	Reduction of Storage	Seawater Intrusion	Degraded Quality	Land Subsidence	Surface Water Depletion
						

On August 20, the MBGSA staff presented an initial screening of the sustainability indicators to the Board. The depletion of interconnected surface water sustainability indicator was screened out because available data suggest groundwater pumping from the principal aquifers in the Basin is not hydraulically connected to the Santa Clara River.

On December 17, MBGSA staff presented proposed SMC for the degraded water quality sustainability indicator. Staff concluded that significant and unreasonable groundwater quality degradation caused by groundwater pumping has not occurred in the Basin. Staff proposed SMC that are designed to protect current and future beneficial uses of groundwater going forward. The proposed SMC can be viewed in the Dec. 17, 2020 staff report for Item 8b at: <https://www.moundbasingsa.org/full-board-packets/>

The remaining sustainability indicators will be addressed once groundwater modeling results are available in early 2021. **Please join us at our second GSP Public Workshop on Thursday, March 4, 2021 at 6 pm on-line. Please visit <https://moundbasingsa.org/> for more information.**

Groundwater Monitoring Well Grant

MBGSA has applied for a grant from the Department of Water Resources to fund construction of a groundwater monitoring well near Ventura Harbor. MBGSA staff anticipates that at least two new monitoring wells are needed along the coast to provide adequate monitoring for seawater intrusion. The grant, if awarded, would fund one of the needed monitoring wells and save MGGSA rate payers approximately \$500,000. The well would be constructed in mid-2021. The proposed monitoring well would also provide data needed to confirm that groundwater pumping does not impact surface water in the Santa Clara River.



MBGSA staff is working closely with City of Ventura staff to site the proposed monitoring well on City-owned land to minimize land acquisition costs to MBGSA's ratepayers.

Stay tuned for more information about this exciting opportunity!