



<https://www.moundbasingsa.org/>



Groundwater Sustainability Plan Development Update

Your Groundwater Sustainability Plan (GSP) development team has been hard at work on developing the GSP for the Mound Basin. The GSP will describe the groundwater basin, goals for sustainable management of the basin groundwater resources, and an implementation plan to achieve those goals by no later than 2042. For more information concerning the required elements of the GSP, the GSP template can be downloaded from our website using the following link: <https://www.moundbasingsa.org/gsp/>.

The GSP must be submitted to the California Department of Water Resources on or before January of 2022, otherwise the State Water Resources Control Board will take over management of the Basin. Thus the GSP presents an opportunity for locals to decide what sustainability for the Mound Basin looks like and how to achieve it. For more information about our overall GSP planning process please see our GSP development schedule at: <https://www.moundbasingsa.org/gsp/>.

GSP Public Workshop
Thursday
September 3, 2020
Starting at 5 PM

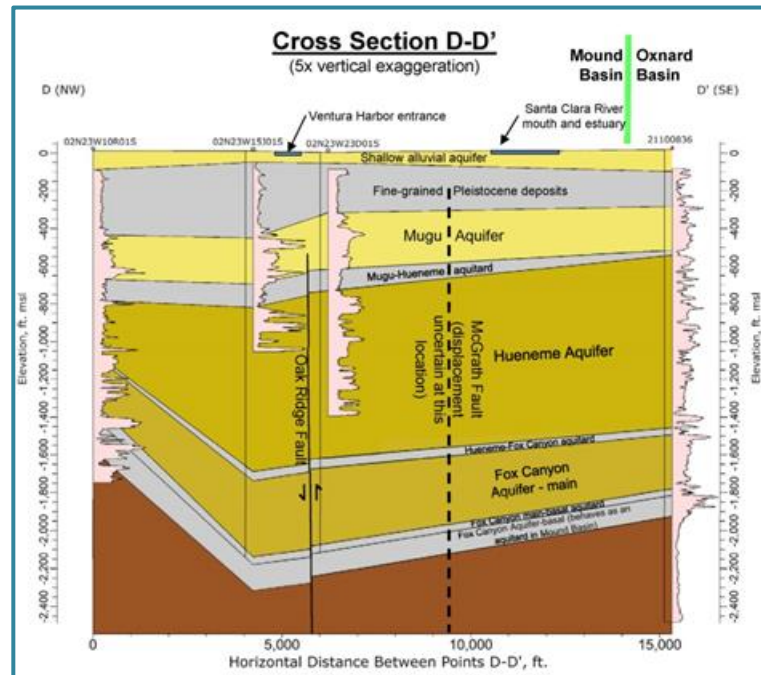
MBGSA will host an on-line public workshop webinar on September 3, 2020 starting at 5 PM.

The webinar will provide an overview of the Sustainable Groundwater Management Act, describe what must be included in the Groundwater Sustainability Plan (GSP), describe our process and schedule for developing the GSP, and an overview of the basin and key issues.

This will be an opportunity to ask questions and provide early feedback on the GSP development process. Your active participation is highly encouraged!

For further details visit:
<https://moundbasingsa.org/>

The GSP development team has been focused on developing the portions of the GSP that describe the physical characteristics of the basin (hydrogeologic conceptual model [HCM]) and the groundwater conditions. These GSP sections will also describe that groundwater and surface water interaction and identify potential groundwater dependent ecosystems that will be considered in the plan along with the other beneficial users of water.



The preliminary draft HCM and groundwater conditions sections of the GSP will be posted on the MBGSA website soon.

MBGSA welcomes your comments and questions on the preliminary draft HCM and groundwater conditions sections of the GSP! Please use our new online comment form at <https://www.moundbasingsa.org/public-comments-invited/> to submit your comments or questions.

Get Involved!

At the core of SGMA is the idea that locals should make groundwater management decisions, not the State. Your input is critical for ensuring the Mound Basin GSP reflects local values. Contact our Clerk of the Board Jackie Lozano at: Jackiel@unitedwater.org to be added to our interested parties list!



Board Meetings

Regular Board Meetings are scheduled monthly on the third Thursday. Please visit our website for more information.

To receive Board meeting agendas via e-mail, please contact the Clerk of the Board Jackie Lozano at: Jackiel@unitedwater.org



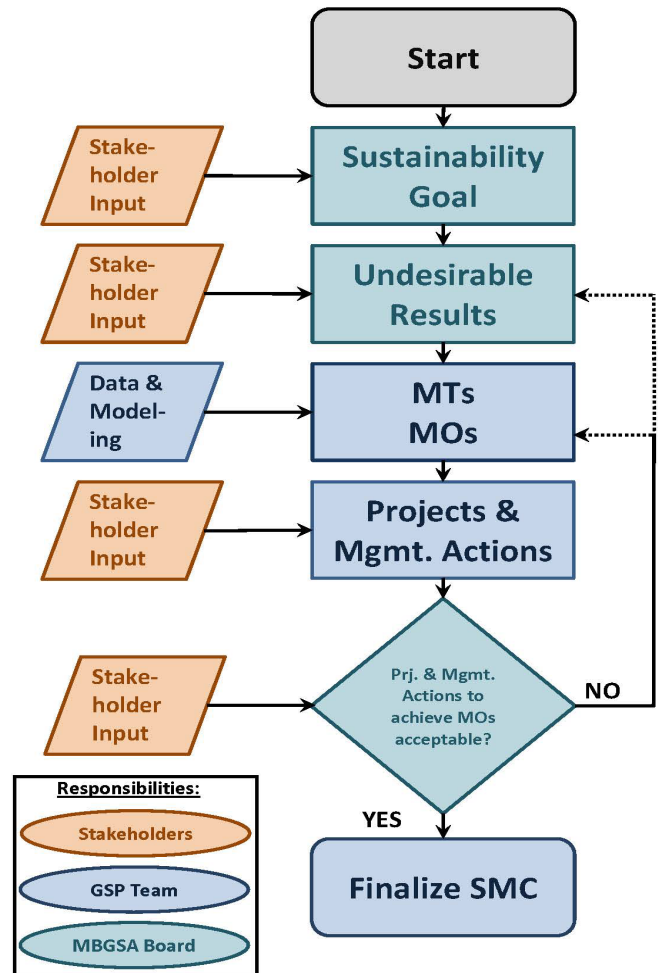
Sustainable Management Criteria

GSA's must develop Sustainable Management Criteria (SMC) for each of the six applicable sustainability indicators. SMC are the most important GSP component



because they define certain conditions in the basin that will be desirable to avoid and certain conditions that are desirable to achieve. There are four components to the SMC:

(1) Sustainability Goal; (2) Undesirable Results (URs); (3) Minimum Thresholds (MTs); and (4) Measurable Objectives (MOs). The sustainability goal is a policy statement that communicates the GSA's mission for the basin and reflects local economic, social, and environmental values. Undesirable results are significant and unreasonable effects related to any applicable sustainability indicator. MBGSA must determine what is considered significant and unreasonable with your input and in the context of its sustainability goal. MTs and MOs are quantitative metrics, such as groundwater levels, that can be measured in the basin to determine if URs are being avoided and the plan goal is being met. MBGSA's SMC development process is depicted in the flowchart. As you can see, your input is a vital to developing the SMC.



It is important to remember that sustainability will be achieved through adaptive management over a 20 year period. New data obtained from actions to address data gaps and from monitoring actions will lead to improved understanding of the basin, which will form the basis for refinement of the SMC and plan implementation actions over time. Thus, the forthcoming GSP, should be viewed as a flexible roadmap for a 20 year journey to sustainable management for the Mound Basin.

DRAFT SUSTAINABILITY GOAL AVAILABLE FOR REVIEW

Please visit <https://moundbasingsa.org/> to review MBGSA's draft sustainability goal. The MBGSA Board is scheduled to consider adopting the sustainability goal at its August 20, 2020 meeting. Your input on the goal is valued and will help make it better reflect the local values in the basin. Please send comments by August 7 to our Clerk of the Board Jackie Lozano at: Jackiel@unitedwater.org.